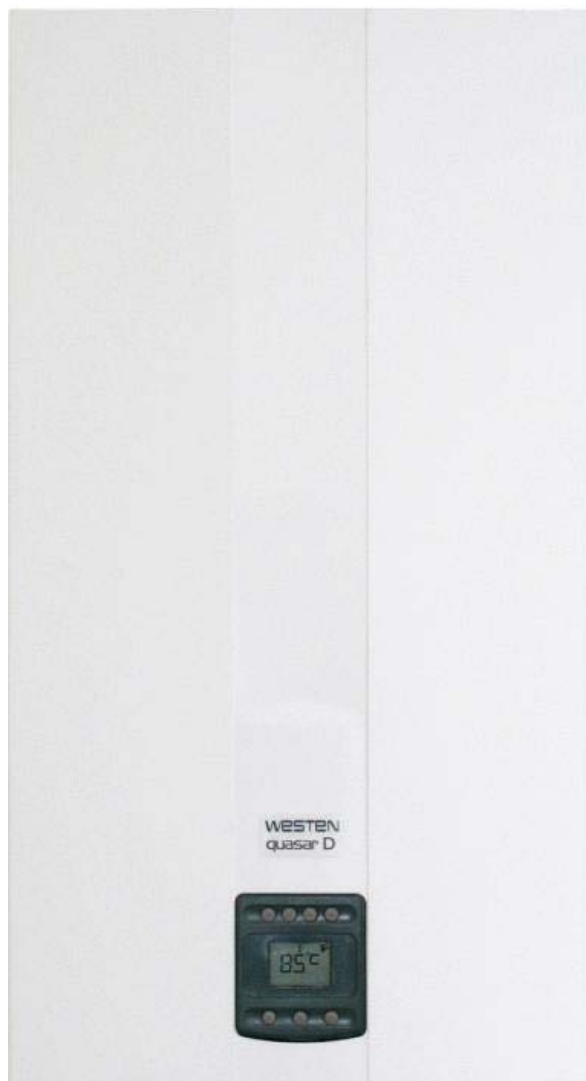


WESTEN

The smart choice for your home comfort



quasar D

SPARE PARTS CATALOGUE

- January 2015 -

HOW TO READ THE SPARE PARTS CATALOGUE

In the spare part catalogue, after the exploded diagrams, there are the components lists of the boilers; this is the meaning of the different columns:

Pos.	Identification number of the component in the exploded diagram of the boiler.
Description	Short description of the component.
Code	BAXI S.p.A. code of the component.
Tab. XX	XX is the exploded diagram number of the boiler taken into consideration.

Until 31th December 2011

From serial number	Date (year and week) identifying the beginning of production of a component (taken from the serial number of the boiler). e.g. B005: year 2000 (B identifies the decade 2000-2009; 0 identifies the year) – 5th week. If the box is empty, the component is in use from the beginning of production of the boiler.
To serial number	Date (year and week) identifying the end of production of a component (taken from the serial number of the boiler). e.g. B012: year 2000 (B identifies the decade 2000-2009; 0 identifies the year) – 12th week. If the box is empty, the component is still in use.
Interchangeable	It identifies the interchangeability between the new component and the old one. YES: components are interchangeable. NO: components are not interchangeable.

From 1st January 2012

From serial number	Date (year and week) identifying the beginning of production of a component (taken from the serial number of the boiler). e.g. 1201: year 2012 (1 identifies the decade 2010-2019; 2 identifies the year) – 01th week. If the box is empty, the component is in use from the beginning of production of the boiler.
To serial number	Date (year and week) identifying the end of production of a component (taken from the serial number of the boiler). e.g. 1225: year 2012 (1 identifies the decade 2010-2019; 2 identifies the year) – 25th week. If the box is empty, the component is still in use.
Interchangeable	It identifies the interchangeability between the new component and the old one. YES: components are interchangeable. NO: components are not interchangeable.

TABELLA COLLEGAMENTO CODICE CALDAIA - ESPLOSO TABLEAU CONNECTION CODEX CHAUDIERE - VUE ECLATEE BOILERS CONNECTION BOARD - EXPLODED VIEW

BOILER CODE	BOILER DESCRIPTION	EXPLODED REF.
CODICE CALDAIA	DESCRIZIONE CALDAIA	RIF. ESPLOSO
CODIGO CALDERA	DESCRIPCION CALDERA	REF. EXPLOSIONADO
CODE CHAUDIÈRE	DESCRIPTION CHAUDIÈRE	RÉF. EXPLOSÉE
BYH442243972	QUASAR D 24	Tab 396
BYH442243971	QUASAR D 24	Tab 396
BYH442243970	QUASAR D 24	Tab 378
BYH446243972	QUASAR D 24F	Tab 395
BYH446243971	QUASAR D 24F	Tab 395
BYH446243970	QUASAR D 24F	Tab 377

quasar D

Pos	Code	Description code	VН442243970 24	VН442243971 24	VН442243972 24	VН446243970 24 F	VН446243971 24 F	VН446243972 24 F	To serial number	From serial number	Intercha ngeable:
2	5698660	LEFT PANEL ASSEMBLY ECO4 ATM.	•	•	•						
2	5698680	LEFT PANEL ASSEMBLY ECO4 FF				•	•	•			
3	5698650	RIGHT PANEL ASSEMBLY ECO4 ATM.	•	•	•						
3	5698670	RIGHT PANEL ASSEMBLY ECO4 FF				•	•	•			
4	628830	FRONTAL PANEL ASS. ECO4 ATM	•	•	•						
4	5117900	FRONTAL PANEL ECO4 WESTEN				•	•	•			
5	5117420	TRAVERSE SIDES CONNECTION FF				•	•	•			
5	5117460	TRAVERSE SIDES CONNECTION-ATM-	•	•	•						
8	5408080	PRESSURE SWITCH PIPE L=270				•	•	•			
9	5115860	RESTRICTOR AIR INTAKE D60/43				•	•	•			
12	5108690	PLATE BLANKING				•	•	•			
13	5407400	SUCTION CAP GASKET				•	•	•			
17	5214290	BEND FLUE EMISSIONS ECO4				•	•	•			
18	5413850	PRESS.SENS.VENTURI SINGLE TAP				•	•	•			
21	5402050	WASHER-SEALING	•	•	•	•	•	•			
22	5682150	FAN				•	•	•			
23	628610	PRESS.SWITCH ASS. 0,68mbar HONEYW.				•	•	•		C121	YES
23	628720	FLUE PRESS.SWITCH 0,68 mbar				•	•	•	C120		
23	710789900	PRESSURE SWITCH ASSEMBLY HUBA				•	•	•	1448		
23	721890300	FLUE PRESS.SWITCH 70-60Pa HUBA				•	•	•		1449	YES
24	5414320	PIPE-VALVE COMPENS.4,5x8 L=170				•	•	•			
25	5118150	CONVEYOR ASSEMBLY ECO4 225mm				•	•	•			
27	5668290	COMBUSTION CHAMBER ASSEMBLY	•	•	•						
27	5700480	COMBUSTION CHAMBER ASSY 225mm				•	•	•			
28	5213210	INSULATING PANEL				•	•	•			
28	5213220	INSULATING PANEL	•	•	•						
29	5213280	INSULATING PANEL	•	•	•					B506	YES
29	5214630	INSULATING REAR PANEL FF 225				•	•	•			
30	5213380	FRONTAL INSULATING PANEL	•	•	•						
30	5214680	INSULATING FRONTAL PANEL FF225				•	•	•			
31	5114290	COMB. CHAMBER FRONTAL PANEL	•	•	•						
31	5700540	COMB.CHAMB.FRONTAL PANEL FF225				•	•	•			
32	616170	BI-THERMAL HEAT EXCHANGER+ OR	•	•	•					B403	YES
32	5663720	BI-THERMAL HEAT EXCHANGER	•	•	•				B402		
32	5700520	HEAT EXCH.H2O/GAS 225mm VALMEX				•	•	•			
33	5403130	O-RING 22 x 3	•	•	•	•	•	•	1311		
33	710963000	OR 21,5X3 EP70 TFL	•	•	•	•	•	•		1312	YES
34	5113650	PRIMARY EXCHANGER FIXING CLIP	•	•	•	•	•	•			
35	5693900	RECT.EXPANSION VESSEL 6l-CIMM-	•	•	•						

quasar D

Pos	Code	Description code	ВУН44243970 24	ВУН44243971 24	ВУН44243972 24	ВУН44243970 24 F	ВУН44243971 24 F	ВУН44243972 24 F	To serial number	From serial number	Intercha ngeable:
35	5693920	CIRC.EXPANS.VESSEL 6l CIMM						•			
35	5693920	CIRC.EXPANS.VESSEL 6l CIMM				•	•				YES
35	5695230	CIRC.EXPANS.VESSEL 6l ZILMET				•	•		C012		
36	5698830	PIPE EXPANSION VESSEL	•	•	•	•	•	•			
37	5663830	SEALED CHAMBER FRONT PANEL				•	•	•			
38	5401610	VIEWING WINDOW GASKET				•	•	•			
39	5203930	VIEWING WINDOW				•	•	•			
40	5115590	SURROUND-SIGHT GLASS				•	•	•			
41	5663710	BURNER ASSEMBLY (13 ELEM.)	•	•	•						
41	5700530	BURNER ASSEMBLY 11 ELEMENTS				•	•	•			
43	5698690	GAS RAMP 13HOLES/INJECT. d1,18	•	•	•						
43	5700500	GAS RAMP 11 HOLES/INJECT d.1,35				•	•	•			
44	5666390	L.P.G. INJECTORS KIT	•	•	•						
44	5669460	NATURAL GAS INJECTORS KIT	•	•	•						
44	5704730	KIT TRANSF.GAS G31 11x0,85				•	•	•			
44	5705280	KIT TRANSF.GAS G20 11x1,35				•	•				
45	5407940	GASKET-BURNER MANIFOLD	•	•	•	•	•	•			
46	5657180	ADAPTOR-MANIFOLD	•	•	•	•	•	•			
47	5407810	GASKET-MANIFOLD ADAPTOR				•	•	•			
49	5409520	HOSE ADAPTER CAP				•	•	•			
59	8612400	IGNITION CABLE L=250 ECO4	•	•		•	•		C112		
59	710430800	IGNITION CABLE L=250 RESIST.	•	•		•	•				YES
59	710430800	IGNITION CABLE L=250 RESIST.			•			•			
61	5407830	INSULATION BOOT - ELECTRODE	•	•	•	•	•	•			
62	5409570	SEALED CHAMBER HOSE ADAPTER				•	•	•			
63	8422570	ELECTRODE - IGNITION	•	•	•	•	•	•			
70	5700340	ASS.PIPE PUMP/EXCHANGER	•	•	•						
70	5700550	PIPE ASS.PUMP/EXCH.MAIN4 FF225				•	•	•	1438		
70	711216000	PIPE ASS.PUMP/EXCH.MAIN4 FF225				•	•	•		1439	YES
72	5698260	PUMP ONE SPEED 5meters WILO	•	•	•	•	•	•			
73	710139500	AUTOMATIC AIR VENT	•	•	•	•	•	•			
75	5404670	GROMMET - PIPE ASSEMBLY				•	•	•			
80	5214590	HYDRAULIC INLET GROUP/PUMP	•	•	•	•	•	•			
90	5700370	CONNECTION CH OUTLET/FILLING	•	•		•	•		C007		
90	710224400	CONNECTION CH OUTLET/FILLING			•			•			
90	710224400	CONNECTION CH OUTLET/FILLING	•	•		•	•			C008	YES
91	5652030	DRAINING TAP	•	•	•	•	•	•			
92	710071200	SAFETY VALVE 3 bar NOVASFER	•	•	•	•	•	•			
98	5214610	BY-PASS PIPE MAIN 4	•	•	•	•	•	•			
99	8380850	FIXING CLIP	•	•	•	•	•	•			
100	5406630	O-RING	•	•	•	•	•	•	1321		
100	711296900	O-RING 13,94X2,62 TFL	•	•	•	•	•	•		1322	YES

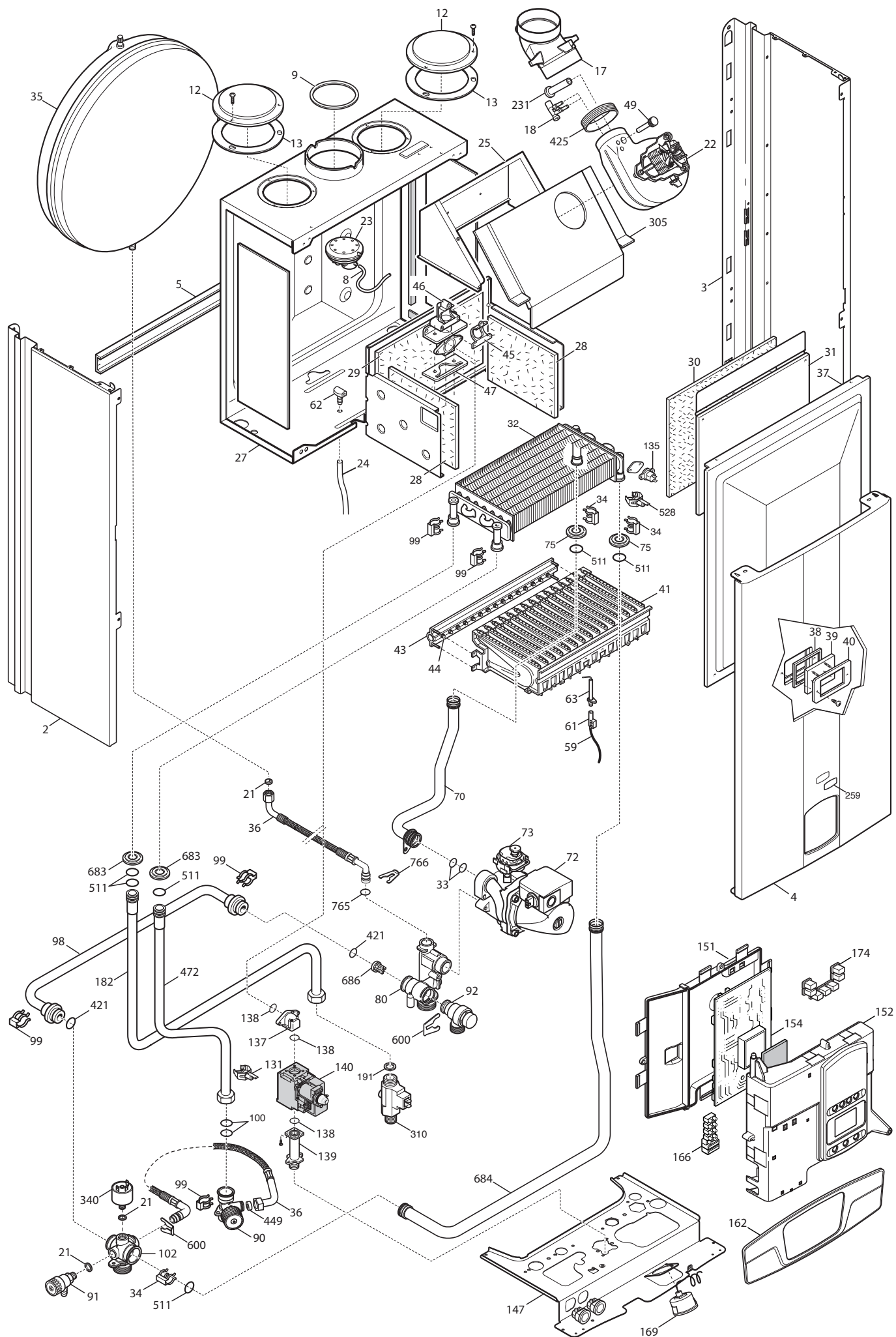
quasar D

Pos	Code	Description code	ВУН44243970	ВУН44243971	ВУН44243972	ВУН44243970	ВУН44243971	ВУН44243972	To serial number	From serial number	Interchangeable:
			24	24	24	24 F	24 F	24 F			
102	5214600	GROUP HEATING INLET MAIN 4	•	•	•	•	•	•			
131	8435400	NTC SENSOR	•	•	•						
131	8435510	NTC SENSOR d.14				•	•	•			
132	5402830	WASHER - SENSOR SEALING	•	•	•						
135	9950760	THERMOSTAT - LIMIT	•	•	•	•	•	•			
137	5214270	GAS V. ELBOW OUTLET OPEN FLUE	•								
137	5214280	GAS VALVE ELBOW OUTLET FF				•					
137	5702350	PIPE GAS MAIN 4 ATM		•	•						
137	5702360	PIPE GAS MAIN 4 FF					•	•			
138	5402010	O RING 22.22x2.62	•	•	•	•	•	•			
139	5206620	CONNECTOR-GAS VALVE INLET	•			•					
140	5653610	GAS VALVE - SIGMA 845048	•			•					
140	5665220	GAS VALVE HON.	•			•					
140	5702340	GAS VALVE VK4105G M-M G3/4		•			•				
140	710669200	GAS VALVE VK4105M M-M G3/4			•			•			
147	5693850	CONNECTION TRAVERSE ECO4	•	•	•	•	•	•			
151	631660	CONTROL PANEL ECO4	•		•	•		•		1224	
151	631670	CONTROL PANEL MAINFOUR (G)		•				•		1224	
151	5413650	CONTROL PANEL COVER ECO4	•		•	•		•	1223		
151	5414290	ELECTR.BOX REAR COVER MAINFOUR		•				•	1223		
152	5698980	PRINT.CONTR.PANEL ECO4 WESTEN	•	•	•	•	•	•			
154	5702470	PCB GROUP HONEYWELL SM11460	•			•			1235		
154	5705240	PCB GROUP HONEYWELL SM11463		•				•	C107		
154	710591400	PCB HONEYWELL SM11463		•						C108	YES
154	710648100	PCB HONEYWELL SM11465						•		C108	YES
154	710825400	PCB SM11470			•			•			
154	710825400	PCB SM11470	•			•				1303	YES
154	711048700	PCB SM11470	•			•			1302		
166	5688430	TERM.BOARD/DOUBLE FUSE HOLDER	•	•	•	•	•	•			
169	8922460	MANOMETER d.40 XGR. BITRON	•	•	•	•	•	•			
174	628840	KEYBOARD 3 AND 4 BUTTONS	•	•	•	•	•	•			
182	5701380	WATER INPUT PIPE MAIN 4	•	•	•						
182	5701390	WATER INPUT PIPE MAIN 4 FF 225				•	•	•			
191	5408970	WASHER - SEALING G1/2	•	•	•	•	•	•			
192	5404650	SEALING WASHER G 3/4		•	•		•	•			
231	5409480	FLUE INTAKE				•	•	•			
241	5668420	CONVEYOR ASSEMBLY	•	•	•						
242	616160	FLUE SAFETY THERMOSTAT 70ø	•	•	•						
259	5700470	BRAND QUASAR D WESTEN	•	•		•	•				
259	710771400	BRAND QUASAR D WESTEN			•			•			
305	5118160	FAN BRACKET 225				•	•	•			
310	5667220	FLOW SWITCH BITRON	•	•	•	•	•	•			

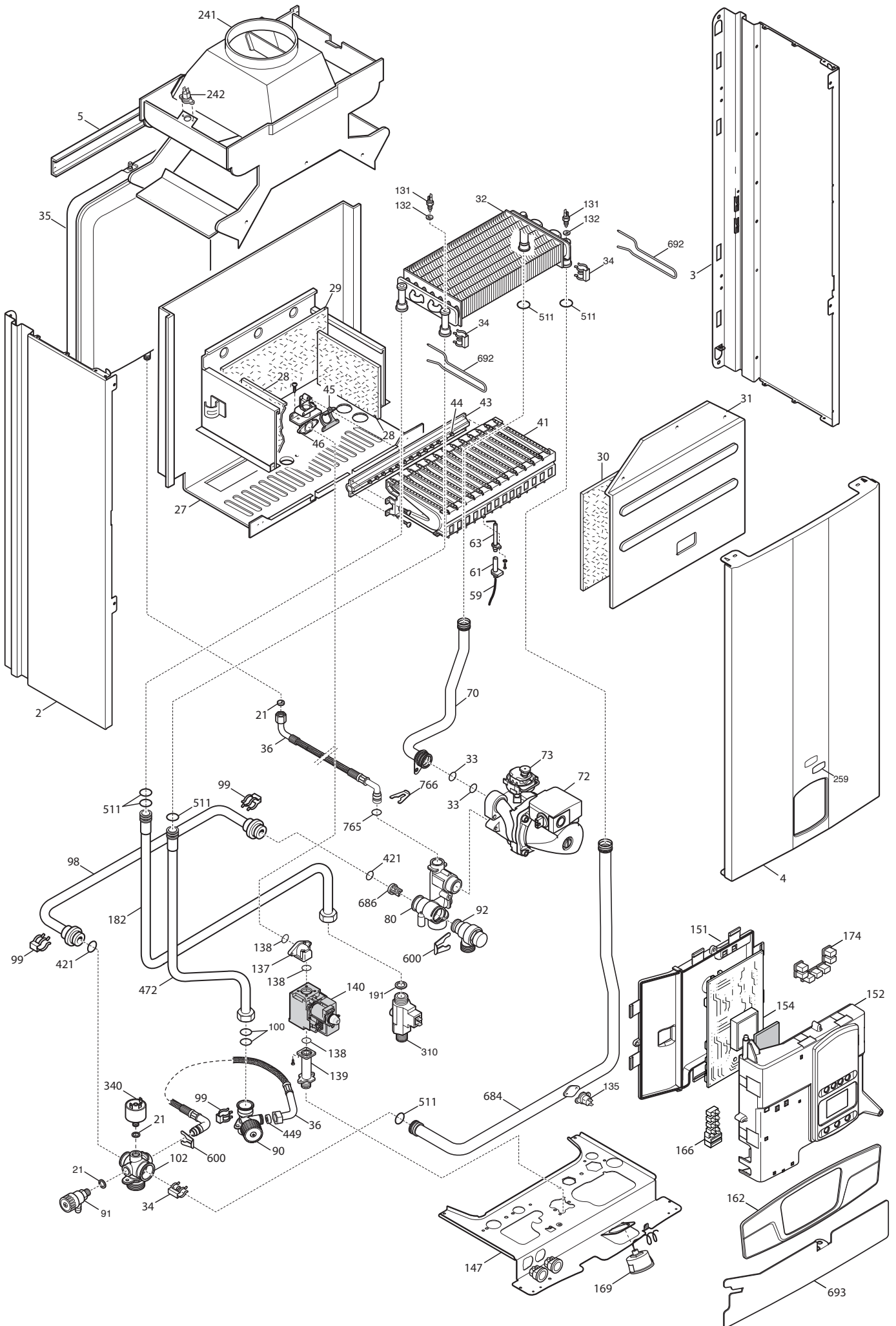


Pos	Code	Description code	ВУН44243970 24	ВУН44243971 24	ВУН44243972 24	ВУН44243970 24 F	ВУН44243971 24 F	ВУН44243972 24 F	To serial number	From serial number	Intercha ngeable:
310	710228100	FLOW SWITCH BITRON		•				•			
340	9951690	PRESSURE SWITCH	•	•	•	•	•	•			
421	5408270	O-RING 11,91 X 2,62 NBR	•	•	•	•	•	•			
425	5412270	GASKET FAN HT				•	•	•			
449	5640030	RETAINING VALVE	•	•	•	•	•	•			
472	5214580	DHW INLET PIPE MAIN4 OPEN FLUE	•	•	•						
472	5214670	DHW INLET PIPE MAIN 4 FF 225				•	•	•			
511	5404600	O.R. 17,86x2,62	•	•	•	•	•	•			
528	8435500	NTC SENSOR D18-ITS2410201/0-				•	•	•			
600	710045400	CLIP FLAT d.18	•	•	•	•	•	•			
683	5408810	GASKET GAS RAMP				•	•	•			
684	5214650	PIPE EXCH./HEAT.OUTLET FF 225				•	•	•	1438		
684	5700350	PIPE EXCHANGER/HEATING OUTLET	•	•	•						
684	711216100	PIPE EXCH./HEAT.OUTLET FF 225				•	•	•		1439	YES
686	5663020	BY-PASS PLUG ASSEMBLY	•	•	•	•	•	•			
692	5114360	PRIMARY EXCHANGER CLIPS	•	•	•						
693	5117440	PRINTED CNTR. PANEL PROTECTION	•	•	•						
765	710045700	O-RING d.9,19 X 2,62	•	•	•	•	•	•		1314	YES
765	710069700	O-RING 9,19X2,62 EPDM	•	•	•	•	•	•	1313		
766	5118110	FLAT SPRING diameter 10	•	•	•	•	•	•			
999	8414540	CABLE ROOM TH	•	•	•	•	•	•			
999	8414620	POWER CABLE	•	•	•	•	•	•			
999	8419040	CABLE - EARTH	•	•	•	•	•	•			
999	8513660	FAN WIRING ECO4				•	•	•			
999	8514030	HIGH VOLTAGE WIRING MAIN 4 SIT	•			•					
999	8514040	HIGH VOLT.WIRING MAIN4 HONEYW.	•		•	•		•			
999	8514050	LOW VOLT.WIRING 12P MAIN 4 ATM	•								
999	8514060	LOW VOLT.WIRING 6P.MAIN 4 ATM.	•								
999	8514070	LOW V.WIRING 12P. MAIN4 FF 225				•		•			
999	8514080	LOW VOLT.WIRING 6P.MAIN4 FF225				•		•			
999	8514130	LOW VOLT.WIRING 12P.MAINFOUR					•				
999	8514140	WIRING BT 6P. MAINFOUR					•				
999	8514150	HIGH VOLTAGE WIRING MAINFOUR		•			•				
999	8514160	GAS VALVE WIRING MAINFOUR		•			•				
999	8514170	LOW VOLT.WIRING 12P.MAINFOUR		•							
999	8514180	LOW VOLT.WIRING 6P.MAINFOUR		•							
999	710714500	LOW POWER CABLE 12PIN MAINFOUR			•						
999	710767000	LOW V. WIRING 6P. ATM			•						

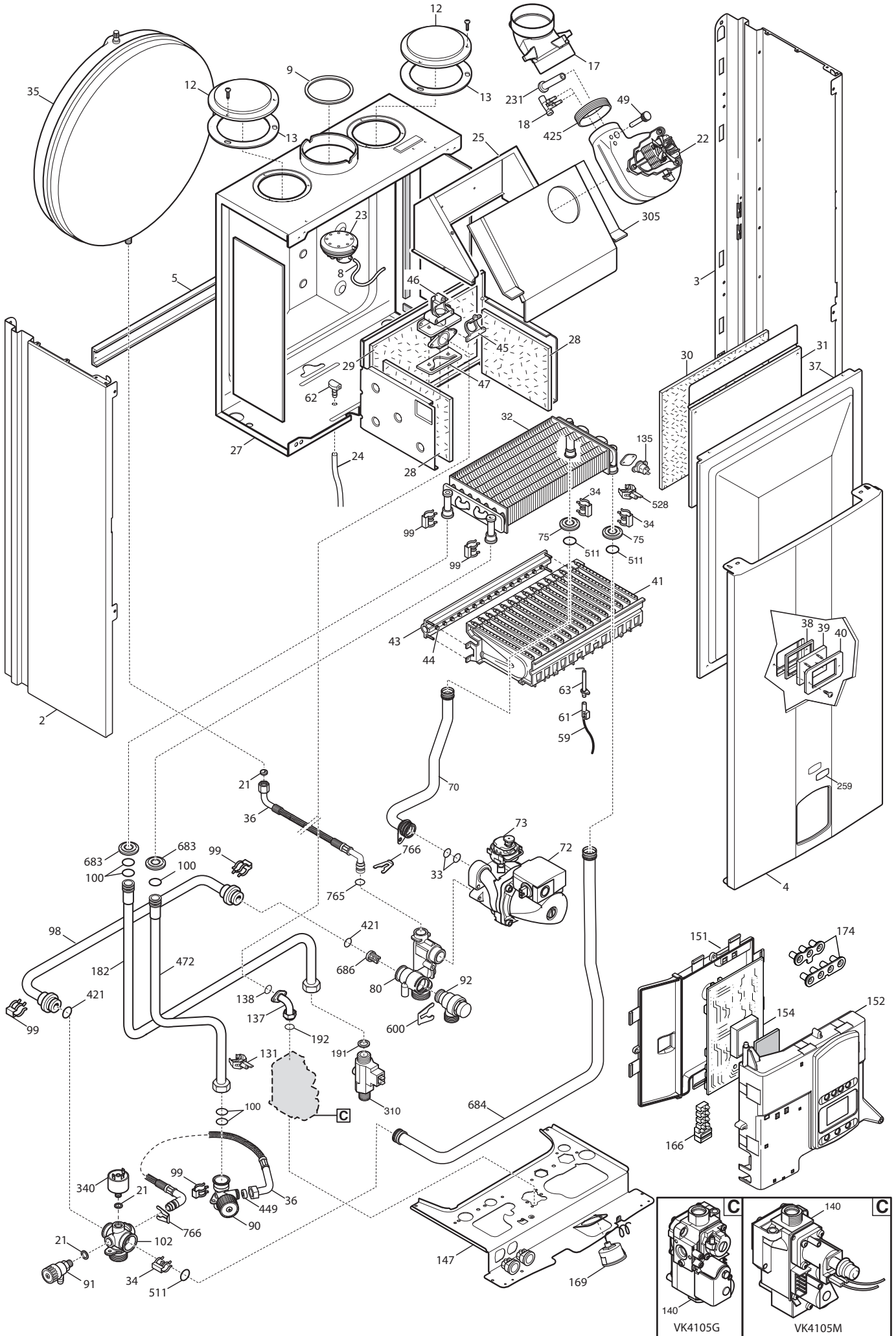
Tab 377



Tab 378



Tab 395



WESTEN

BAXI S.p.A.
Via Trozzetti, 20
36061 BASSANO DEL GRAPPA (VI) ITALY
Tel. +390424517111 Telefax +390424517379
Web site: www.baxi.it e-mail: service@baxi.it